



okamura.com.vn

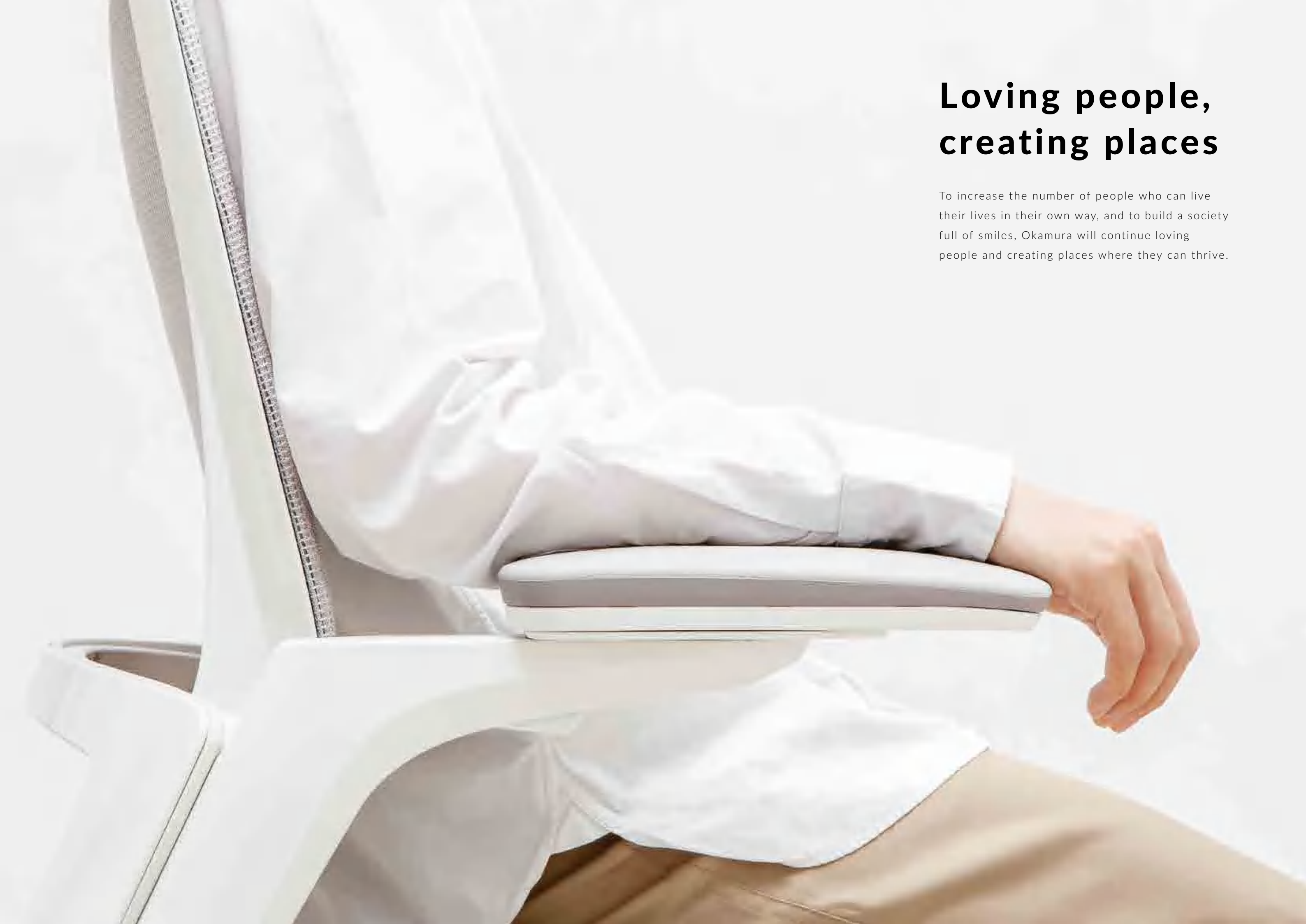
Okamura International Vietnam Co., Ltd.

HCMC
Location Suite 1104B, 11th Floor Saigon Tower, 29 Le Duan St., Ben Nghe Ward, District 1, HCMC, Vietnam
Tel +84-28-3822-6392

HANOI
Location CP2.L.02, 19 Floor, Capital Place, No 29 Lieu Giai St., Ngoc Khanh Ward, Ba Dinh District, Hanoi City, Vietnam
Tel +84-24-7300-6879

E-mail marketing@okamura.com.vn

The products listed in this catalog are available as of January 2022.
Please note that specifications, dimensions, and colors are subject to change without notice. The colors of the actual products may differ somewhat from the colors shown in the catalog, depending on printing conditions.



Loving people, creating places

To increase the number of people who can live their lives in their own way, and to build a society full of smiles, Okamura will continue loving people and creating places where they can thrive.

76

years
in business

3,834

employees

over
USD 2.4 bn

sales
(consolidated)

32

group
companies

over
50

countries
distributed

690

design
awards

HISTORY

The spirit of manufacturing
passed down through generations.

- 1945

Okamura founded in Yokohama City, taking the name of its location in Okamura Town.
- '57

Developed Japan's first front-wheel-drive automatic, the Mikasa.
- '48

Started manufacturing garden tables and chairs.
- '58

Oppama Plant established.
- '50

Began production of torque converters for trains, cars, and industrial vehicles.
- '64

Junior desk and seating production and sales began.
- '53

Jointly developed Japan's first post-war aircraft, the N-52, with the University of Japan.
- '69

Began sales of Japan's first colored desks and chairs, the Type-33 and the Type-21.
- '55

Began production of the Type-36 office desk, an early form of today's modern work station.
- '82

Export of Rotary Rack technology to the United States.
- '84

D-10 office automation furniture introduced.
- '86

Launched Type-28, a chair made wholly from plastic.
- '91

Introduced the F Series total design package for desks, chairs, storage and partitions.
- 2002

Exhibited for the first time at ORGATEC 2002, Europe's largest office furniture show.
- '08

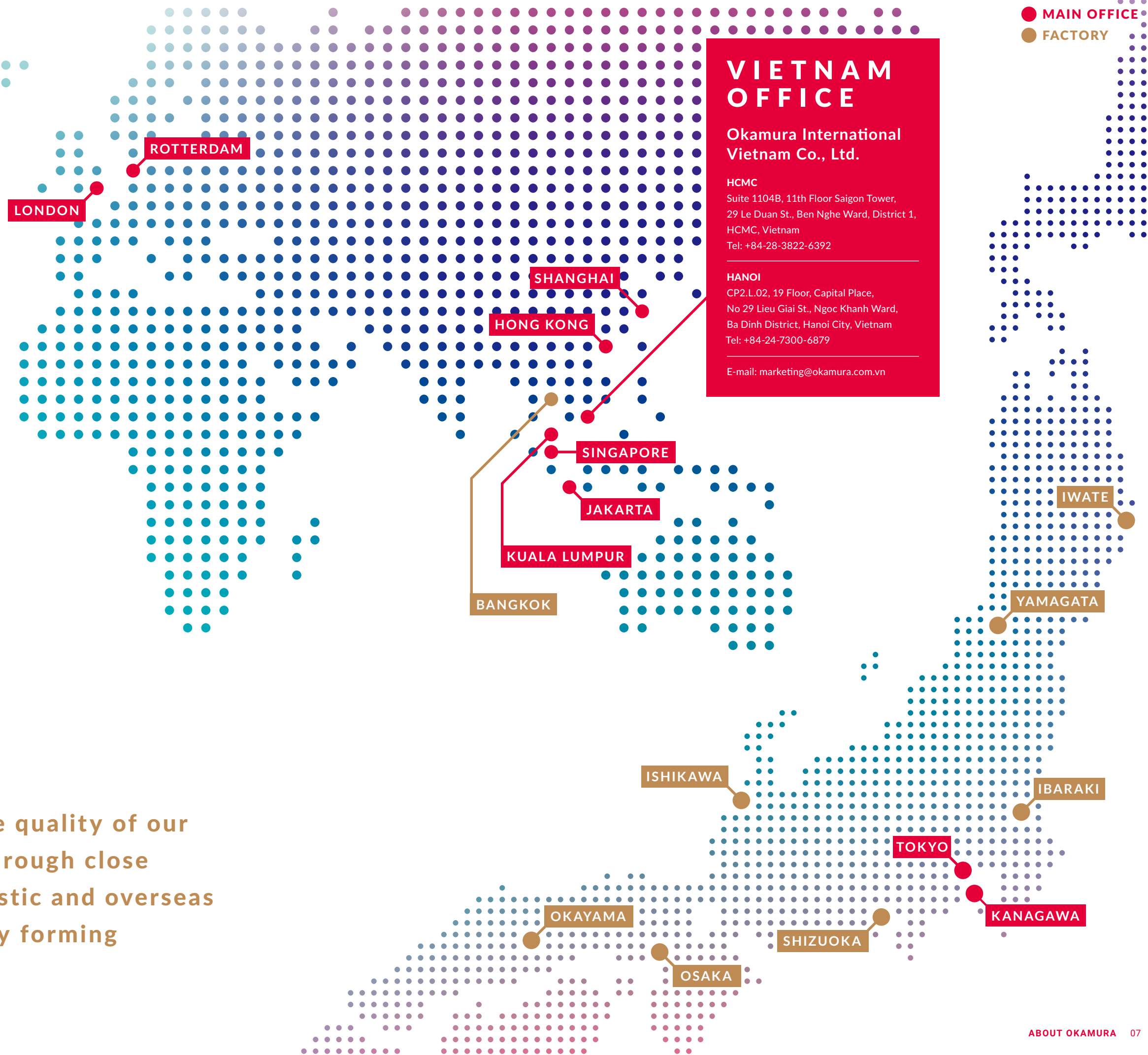
Chicago Showroom opened. Participated in NeoCon 2008.
- '09

Okamura Museum opened.
- '14

Okamura Future Studio = KiZUKi LABO opened.
- '20

Okamura International Vietnam Co., Ltd. established.

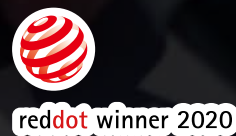
GLOBAL NETWORK



We strive to improve the quality of our products and services through close collaboration with domestic and overseas partners and affiliates by forming technology alliance.

CREATIVITY & QUALITY

DESIGN AWARDS

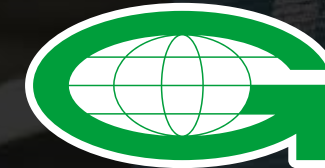


DESIGN POLICY

Since the founding of Okamura, we have worked to create optimized human environments using our knowledge of hardware and software. Through the three tenets of our design policy, we create attractive spaces for the next generation. In the pursuit of manufacturing that benefits all people, Okamura's high-quality designs employ both functionality and safety.



SAFETY & ENVIRONMENTAL CERTIFICATIONS



BIFMA

WARRANTY PERIOD

The following cases are excluded from the warranty;

- Due to wear and tear caused by normal use
- Damage to cloth, mesh, etc. due to human factors
- Products customized or modified locally

*The warranty period for Vietnamese products is one year.



FRAMES | SHELLS
BASES | LEGS
ADJUSTABLE ARMS

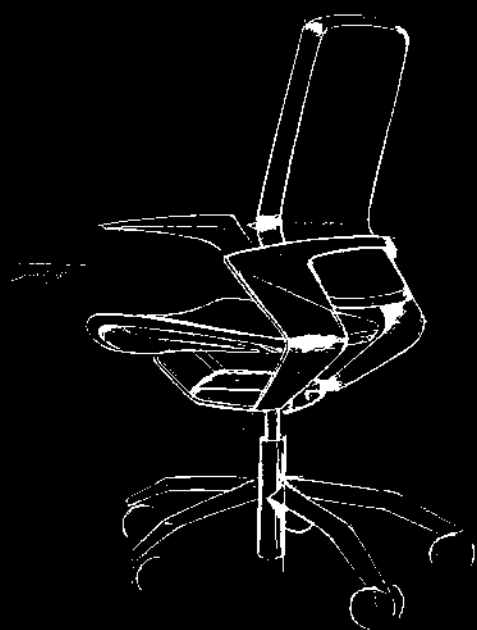


GAS CYLINDER | CUSHIONS
COATING FINISH | MESH
FABRIC & CLOTH
ARM-PADS | CASTERS

OKAMURA × ITALDESIGN

A statement of
style and identity.

Introducing Finora: dreamed by Italdesign, a company that excels in mastering the complexity of automotive design, and engineered by Okamura. Precision meets soul in graceful symmetries and clean contours, creating a chair that brings the beauty of lightness with full features for any workplace.



The Industrial Design Division of Italdesign, headquartered in Moncalieri, Torino - Italy, was established in 1981 and today is one of the most renowned and leading organizations in the industrial and transportation design fields on a worldwide level. Acclaimed for its proclivity in all-round functional design, Italdesign's projects range from automobiles to pieces of furniture, from tires to watches and home appliances.

2002
Contessa



2004
Baron



2010
Luce



2012
Sabrina



2016
Contessa II
seconda



2018
Finora



OKAMURA × KAWASHIMA SELKON TEXTILES

Okamura's mesh by Kawashima Selkon Textiles, rooted in Nishijin-ori - a traditional type of weaving unique to Kyoto, Japan, has evolved in various ways design wise. Naturally, everything from material procurement, to mesh construction and chair assembly takes place in Japan. It's this 'Made in Japan' quality that makes our mesh seating so special.



kvadrat

Kvadrat is Europe's leading manufacturer of design textiles. We create high quality contemporary textiles and textile-related products for private and public spaces. Kvadrat' designs reflect our dedication to pushing the aesthetic, technological and artistic boundaries of our field and are characterised by: simplicity, colour and innovation.



Kawashima Selkon Textiles was founded in 1843, in Nishijin, Kyoto, Japan - the home of Nishijin-ori weaving. Their work and quality are extremely highly regarded and can be found in the Kyoto State Guest House, with earlier examples also including the Meiji Palace and the former Crown Prince's Palace (now known as the Akasaka State Guest House).

OKAMURA × KVADRAT

Okamura and Kvadrat were united by a shared quest to create the highest quality and beautiful designs. Together we will continue to make work environments more creative and pleasing, by elevating the seating to the level of an exquisite, yet hardworking piece of art.

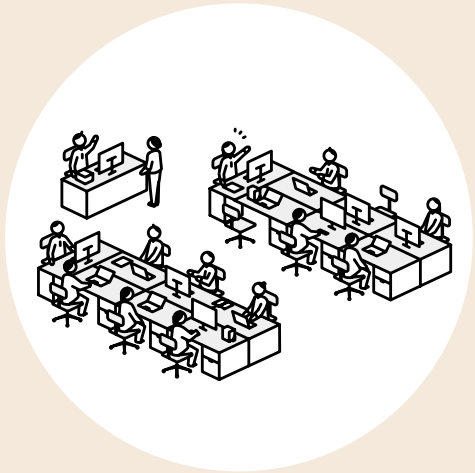


GUIDE TO WORK STYLES

WHAT IS YOUR WORKING STYLE?

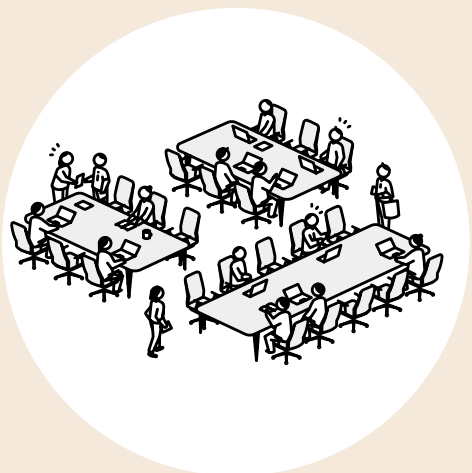
As a global company, Okamura has studied best practices through history and from around the world to understand how office spaces are evolving. With more choices than ever, we are creating furniture that supports how people work best.

Designated Desk Workspace



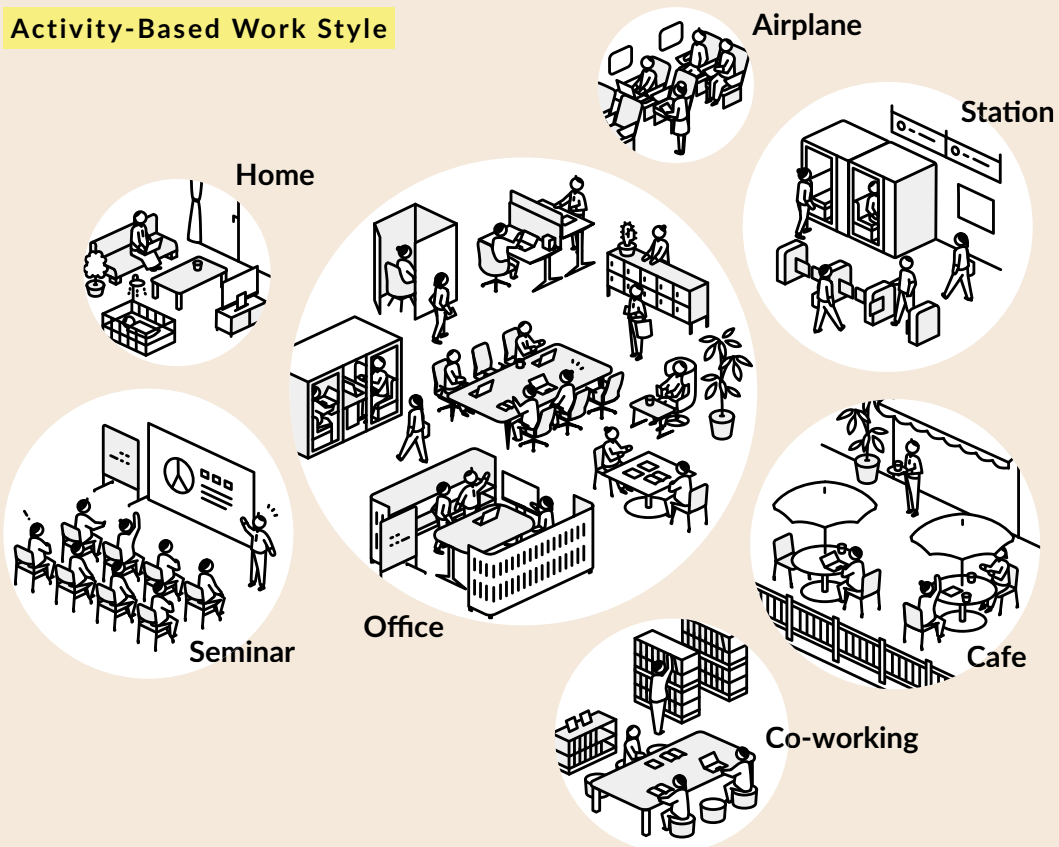
Whether corner offices, cubicles, or "owned" desks, each employee has their own dedicated place to work. It works great for professionals who work with confidential documents or those who work most efficiently in the same location.

Hot Desk Workspace



"Hot desks" and hoteling means that everyone shares all desks, and are free to work anywhere in the open-plan office. It maximizes the use of real estate, encourages collaboration, and reduces isolation.

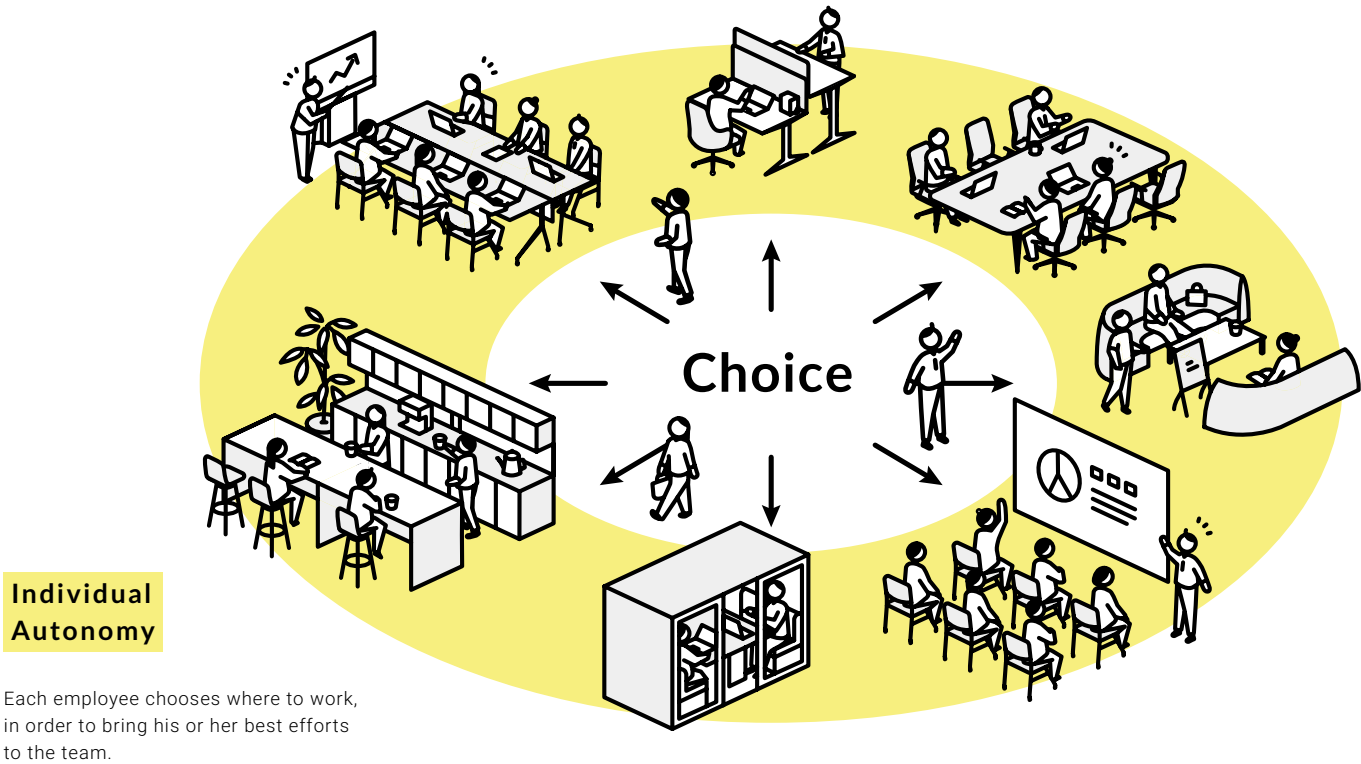
Activity-Based Work Style



Any place can be a workspace. Not only is the entire office floor shared workspace – from desks to cafés, seminar rooms to pods for team working – but places outside of the office such as coworking spaces and living rooms can also be workplaces. Employees work in the area best-suited to their current work activity.

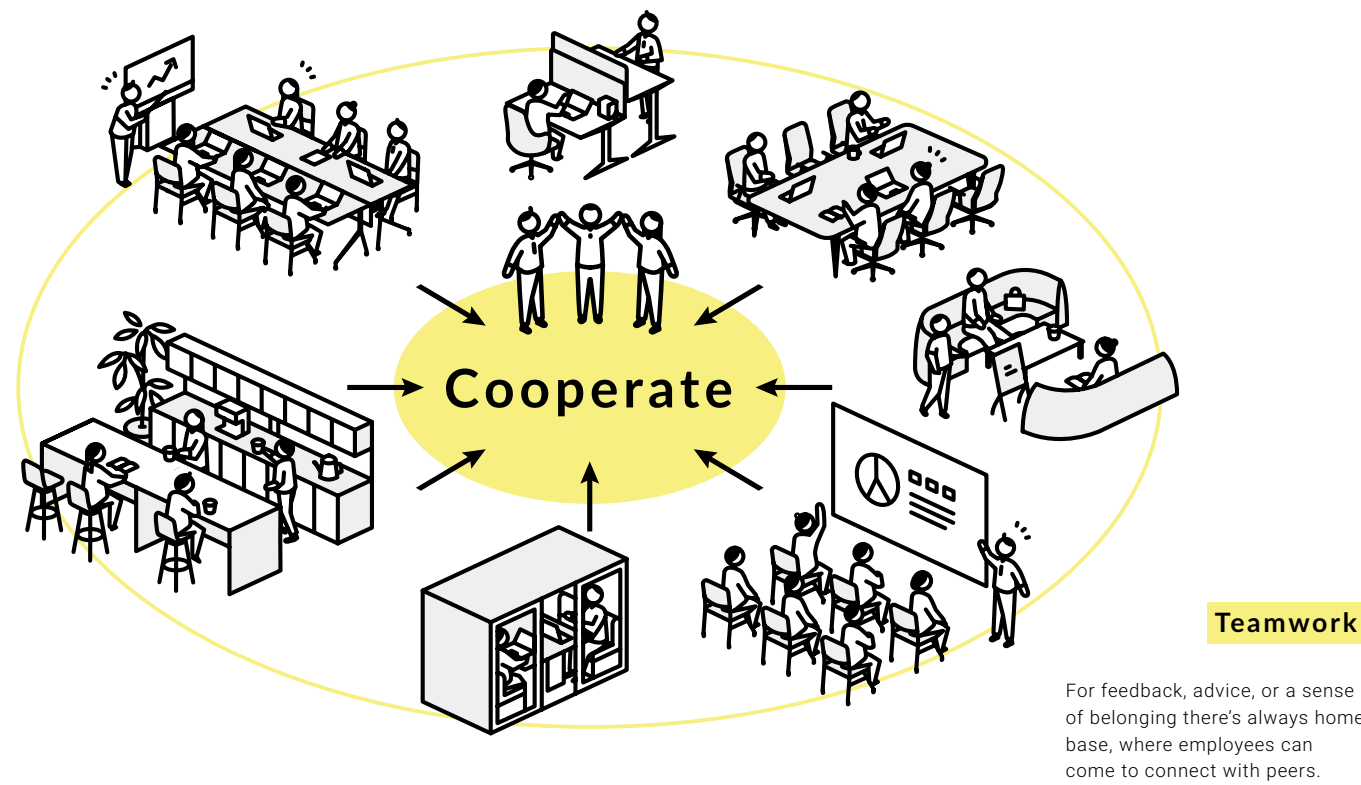
THE NEXT OBVIOUS EVOLUTION

Drawing upon Designated Desk Workspaces, Hot Desking, and Activity-Based Work Style employees today are more accountable for how they accomplish individual work more than ever before. But most work projects are team work – individual efforts, woven together.



Individual Autonomy

Each employee chooses where to work, in order to bring his or her best efforts to the team.



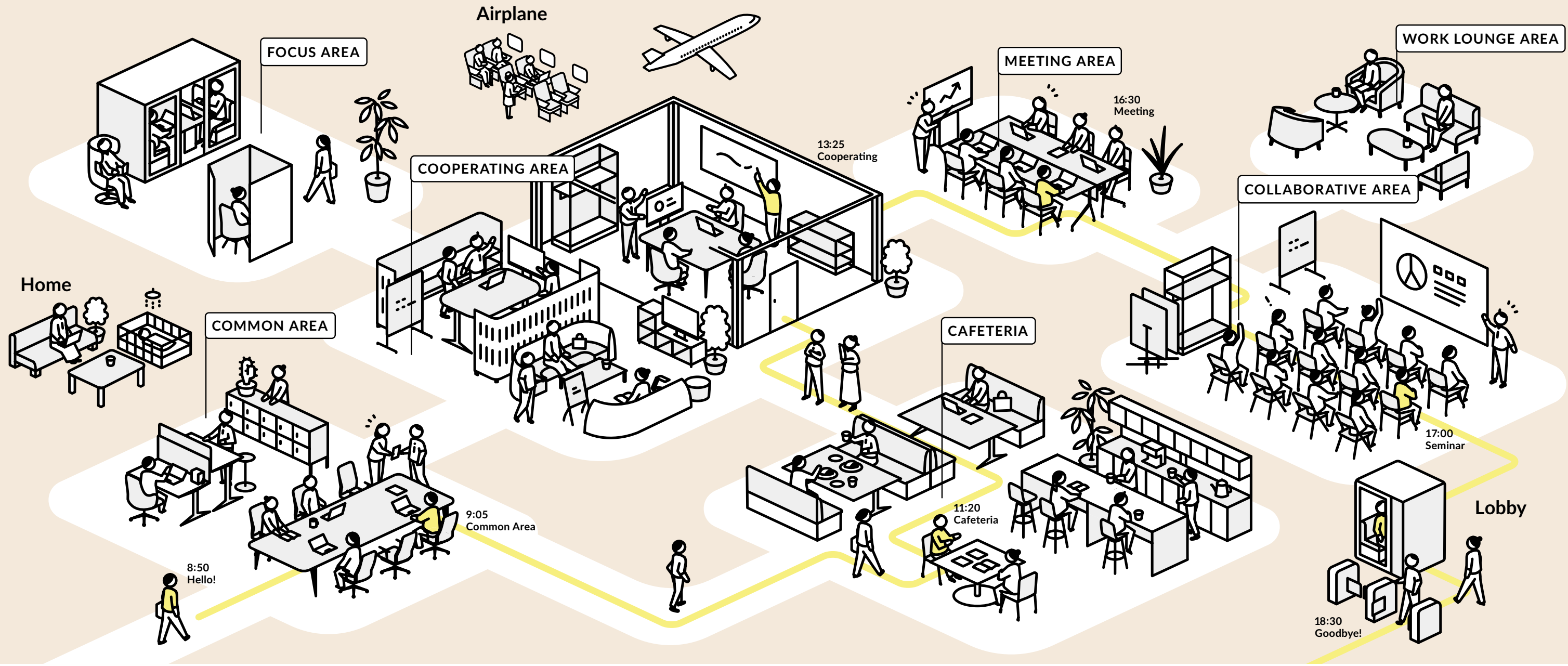
Teamwork

For feedback, advice, or a sense of belonging there's always home base, where employees can come to connect with peers.

OFFICE SPACE FOR HIGH PERFORMANCE

In today's offices, there is no one-size-fits all solution. Modern work styles are tailored to the individual, team, and activity — giving employees the freedom to find the space that makes them most productive.

In a world where business happens anywhere/anytime, Okamura has solutions to shape work styles that work.



COMMON AREA



FOCUS AREA



CAFETERIA



COLLABORATIVE AREA



From concept to completion, Okamura products are brimming with the creative spirit. Even the smallest details push the boundaries of conventional design, so we create something entirely new and wholly unique, again and again. All with the end goal to evolve the workplace, creating more productive, more creative, and happier environments.

INNOVATION FOR A BETTER WORKPLACE

PREMIER MODEL

- LEGENDER
- CONTESSA II
- SABRINA
- FINORA
- BARON
- CHORAL
- SHIBUSA
- PLIMODE

HIGH-STANDARD MODEL

- SYLPHY
- LIVES
- CYNARA
- MARCA
- LUCE
- CG-M
- RUNA
- REPIROUE

STANDARD MODEL

- PORTONE SMART
- RIN



P O S T U R E

Legend

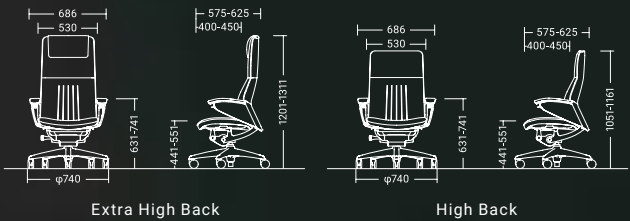
Legend is the ultimate executive chair. A combination of functionality, class and elegance, drawing upon our expertise in ergonomics and our long tradition of creating beautiful furniture. Soft and supple leather and world class design, for the world's leading executives.



LINE UP



DIMENSIONS



FUNCTIONS



COLORS



Made in Japan

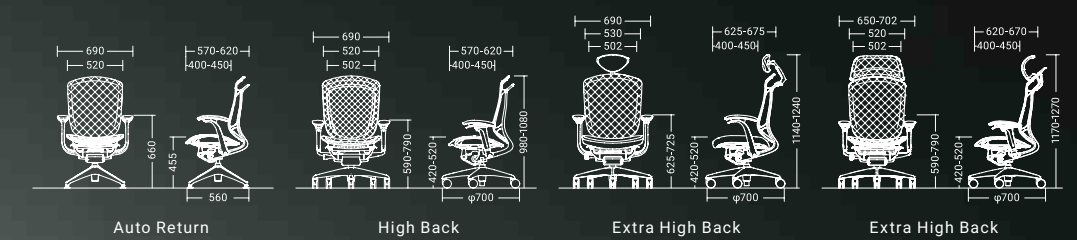
Contessa II seconda

Since debuting on the world stage in 2002, the highly regarded Contessa has been reborn. While the elegant lines of Contessa's original form have been maintained, the chair's functionality has been upgraded to meet the needs of our diverse global customers.

LINE UP



DIMENSIONS



FUNCTIONS



COLORS



Made in Japan

Sabrina

You can see this iconic ring structure not just in back view but from front view through permeable mesh back for which you have ample color variation to choose from.

Welcome to the Sabrina world of the beautiful marriage between state-of-the-art technology and a world-renowned design.



LINE UP



Standard

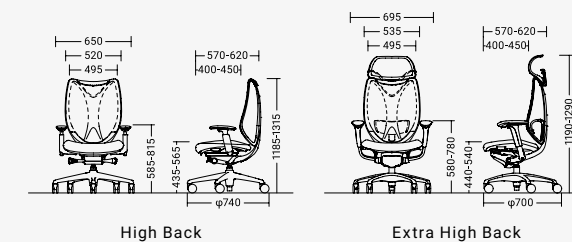
High Back



Smart Operation

Extra High Back

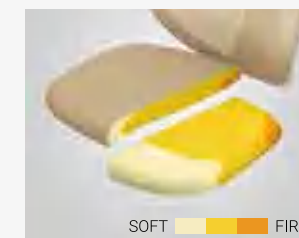
DIMENSIONS



FUNCTIONS

Standard

Setting the standard for comfort. Sabrina Standard's Synchro reclining mechanism moves in sync with you - when you move in the chair, the backrest and seat move backwards or forwards accordingly - supporting to your body at all times.



Multiple Density Cushion



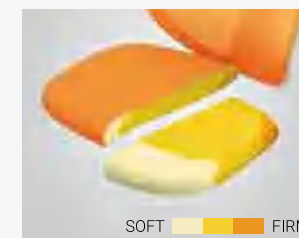
Synchro Reclining



Reclining Lock & Tilt Adjustment

Smart Operation

An upgrade of the standard. Intuitive armrest controls and an Ankle-Tilt Reclining mechanism which naturally distributes body weight make for all-day wellbeing and comfort.



Multiple Density Cushion



Smart Operation



Quick Slide Operation

COLORS

Back : Mesh | Seat : Fabric



Made in Japan

Finora

Elevate your work in the uncompromised beauty of lightness.

Finora was designed to encapsulate beauty with streamlined thinness and lightness.

By applying the design philosophy that is distinctive to the automotive industry,

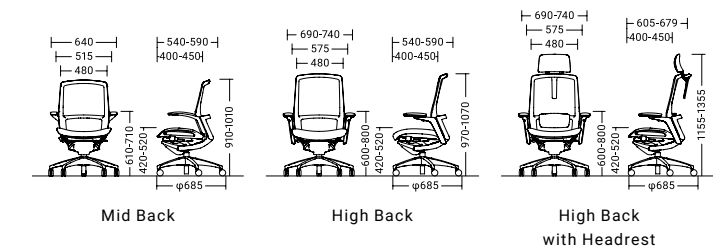
Finora provides the modern worker with a high level of functionality for the ultimate level in comfort in an office chair without sacrificing the esthetic design.



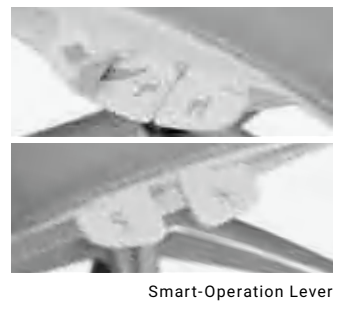
LINE UP



DIMENSIONS

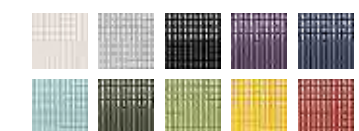


FUNCTIONS

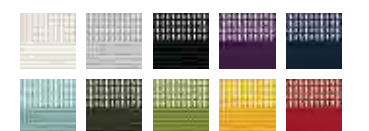


COLORS

Back : Mesh | Seat : Mesh



Back : Mesh | Seat : Fabric



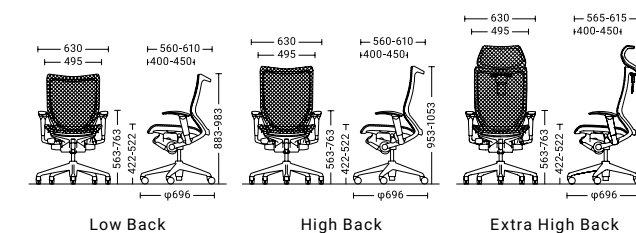
Made in Japan

Baron

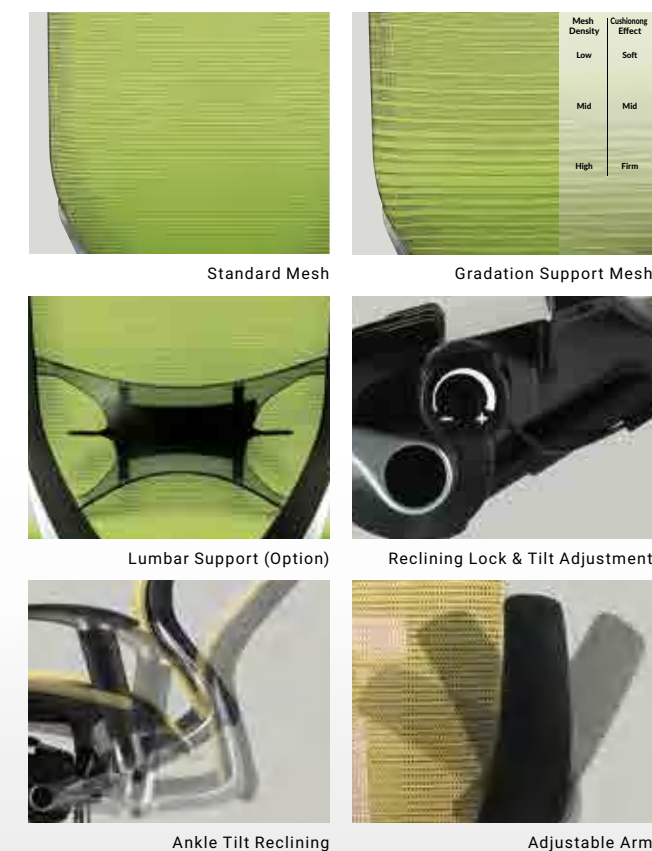
LINE UP



DIMENSIONS



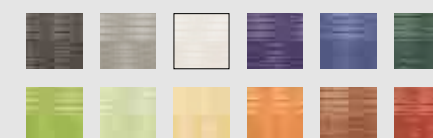
FUNCTIONS



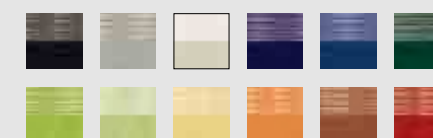
COLORS

- Standard Mesh

Back : Mesh
Seat : Mesh



Back : Mesh
Seat : Cushion



- Gradation Support Mesh

Back : Mesh
Seat : Cushion



Experience the pleasure of sitting in a chair of the most advanced ergonomic design. Complement and invigorate any office arrangement with a chair design of extraordinary simplicity. Embellish your workspace with a choice of 12 mesh fabric colors. The team of the Italian design firm Giugiaro Design and Okamura Corporation has created a completely new kind of mesh chair. Baron series uses the world's most advanced seating technology to create office chairs to meet the needs especially for today's cutting edge work spaces.



Made in Japan



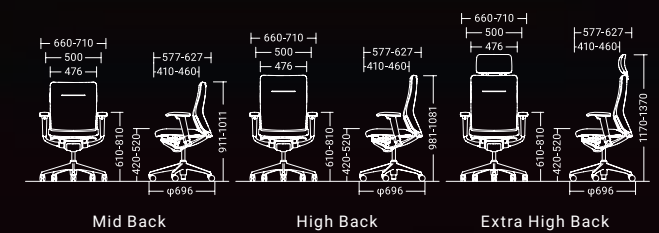
Choral's name symbolizes the concept of a "perfectly tuned chair" - ergonomically tuned to your body and aesthetically tuned to the office. This simple approach has achieved a timeless design and dynamic beauty that is harmonized to complement a multitude of office environments.

Choral

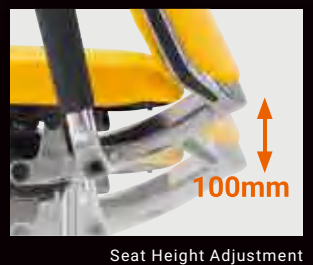
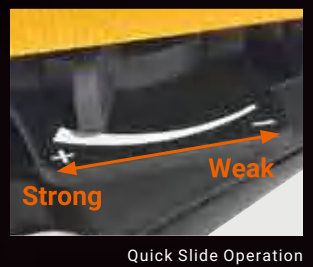
LINE UP



DIMENSIONS



FUNCTIONS



COLORS



Made in Japan

SHIBUSA

Simplicity, implicity, modesty, naturalness, everydayness, imperfection, and silence. In these traits, one discovers the Japanese aesthetic philosophy of shibusa. Suspended in the balance between simplicity and complexity, restraint and spontaneity, SHIBUSA by Okamura represents understated elegance and quiet confidence.



LINE UP



Mid Back

High Back

FRAME TYPES

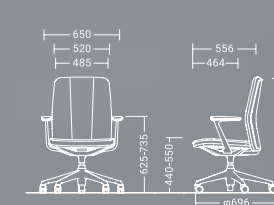


Polished Flame

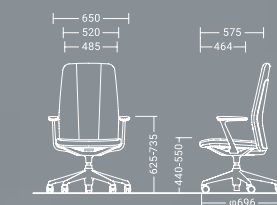


Black Flame

DIMENSIONS



Mid Back



High Back

FUNCTIONS



The exclusive tilt mechanism provides postural support for the activities of conferencing. A fixed seat cushion and a backrest recline range of 11 degrees eliminate seat drop, keeping eye levels more consistent.



Height adjustment is activated with a discrete lever easily accessed under the right front seat corner.

COLORS

Back & Seat : Herringbone



Back & Seat : Interlock



Back & Seat : Leather



Back Panel



BIFMA

Made in Japan

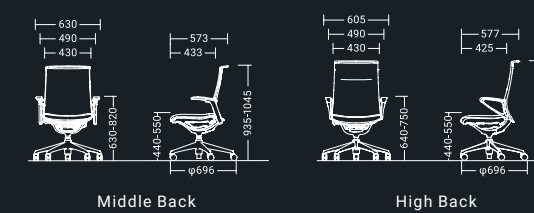
plimode

Plimode helps you maintain optimal posture, leaving you refreshed and invigorated. Admire the attention to quality in every stitch and detail, from the chair's fit to the final finish. Plimode is imbued with 70 years of Okamura craftsmanship and design.

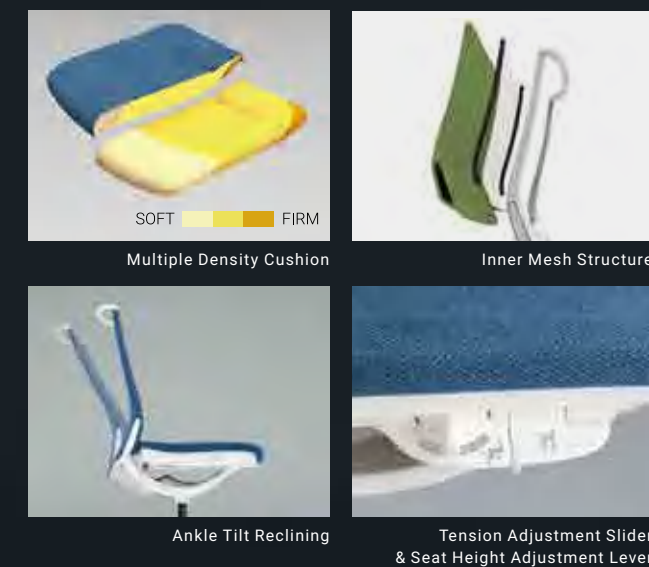
LINE UP



DIMENSIONS



FUNCTIONS



COLORS



Made in Japan

Sylphy

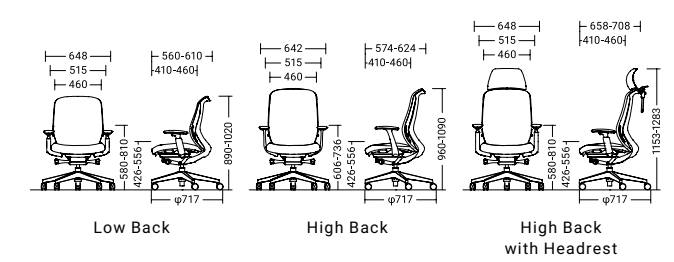
Okamura understands that people's backs are all shaped differently. To accommodate these differences, Sylphy provides superior comfort — as if the backrest were custom-made for you. Sylphy fits every member of your office.



LINE UP



DIMENSIONS



OPTIONS



FUNCTIONS



COLORS



Lives



Today’s office chairs demand more than functionality. Relaxed, residential-feel spaces create work environments where workers express themselves and thrive. Lives Chairs bring a casual look to the office and are equipped with the state of the art features that employees have come to expect.



LINE UP

Work Chair



Entry Chair



Personal Chair



Unit Sofa



Folding Chair



Nesting Chair



Pouf



CYNARA

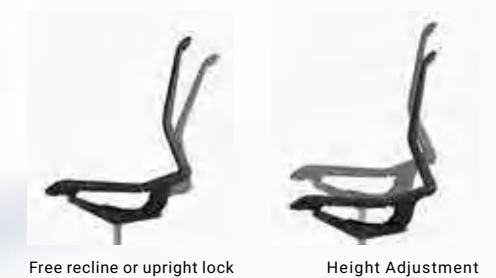
LINE UP



CASTER TYPES



FUNCTIONS



COLORS

Back & Seat : Mesh



Body & Leg



Weightless beauty.
Effortless support.

Experience the impossible lightness and effortless support of Cynara, a task chair that integrates intuitive, responsive functionality with a clean-cut, refined aesthetic to complete any work setting.



Marca

Sharp frame, supple sitting comfort, excellent storage capacity. Marca, the high-quality and delicate design along with human-friendly functions provides new value to the meeting scene.



FUNCTIONS

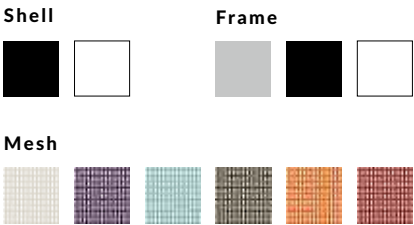


Nesting



Wide Mesh

COLORS



DESK



DESK FUNCTIONS

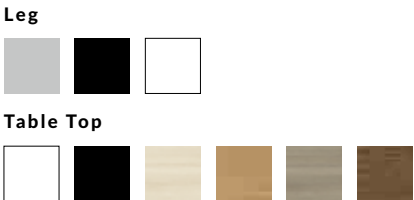


Flappable Top



Nesting

DESK COLORS





Luce

LINE UP



Without Armrests

Armrests

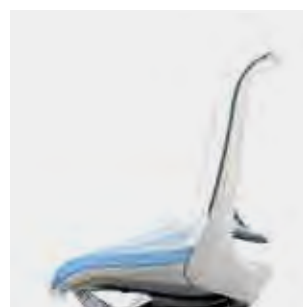
FUNCTIONS



Multiple Density Cushion



Gradated Supportive Mesh

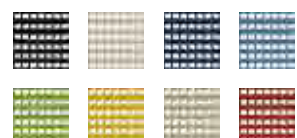


Smart Relaxation Seat

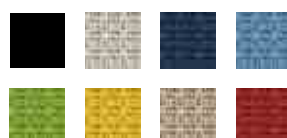


COLORS

Back : Mesh



Seat : Fabric Cushion



CG-M

LINE UP



Adjustable Armrest

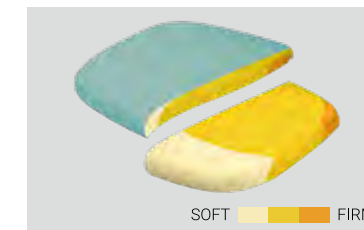
Ring-shaped Armrest



Without Armrest

Hanger

FUNCTIONS



Multiple Density Cushion



Seat Height Adjustment & Backrest Reclining



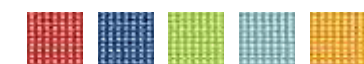
Adjustable Armrest (Option)



Adjustable Hanger (Option)

COLORS

Mesh



Cushion





Runa

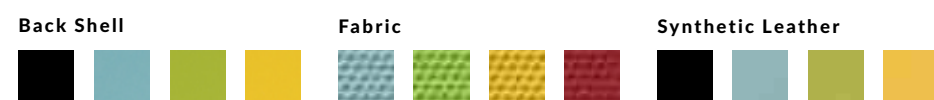
LINE UP



FUNCTIONS



COLORS

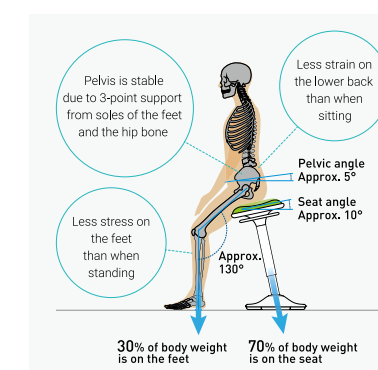


repiroue

BASE COLORS

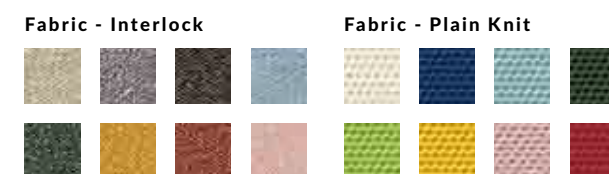


FUNCTIONS



Perching posture does not apply extra pressure on the gluteal muscles and minimizes the stress placed on the intervertebral discs. repiroue distributes body weight between the feet and the buttocks so that the legs are released from solely sustaining the weight.

COLORS



Use the lever underneath the chair to adjust the height between 565mm to 815mm.

The supporting column can tilt in all directions with your body allowing you to sit at comfortable angle and move freely.

You can press the ring with all-around access underneath the seat, making height adjustment quick and easy.





Portone Smart

LINE UP



- Without Armrest
- Without Headrest
- Polished Aluminum

- Adjustable Armrest
- Headrest
- Polished Aluminum

FUNCTIONS



Automatic Weight Sensitive Mechanism



Lockable In Four Positions



Seat Height & Depth Adjustment



Height Adjustable Lumbar Support



4D Adjustable Armrests

COLORS

Back : Mesh | Seat : Cushion



BIFMA

Made in China

Rin

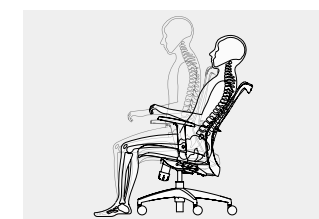
LINE UP



- High Back
- Without Armrest
- Black Nylon Base

- Extra High Back
- 1D/3D Adjustable Armrest
- Polished Aluminum

FUNCTIONS



Synchro Reclining Mechanism



1D/3D Adjustable Armrests



Backrest Reclining



Seat Height Adjustment



Seat Depth Adjustment

COLORS

Back : Mesh | Seat : Cushion



BIFMA

Made in Thailand



Lumbar Support



Backrest Handle

- TRAVERSE
- TRAVERSE SATELLITE
- OREE
- ALT PIAZZA
- SWIFT
- RISEFITIII
- SOLISTE
- MANIFOLD A
- VD-A DESK
- FLAPTOR-A
- DN MOBILE DRAWER

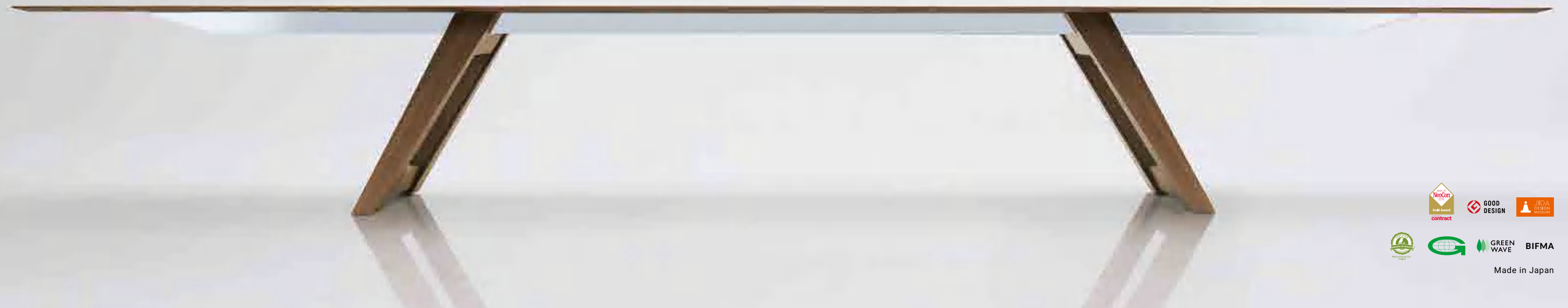


WORK SPACE

traverse

Impossibly thin,
Beautifully strong.

In today's workplace, conference rooms are challenged with shrinking size as well as the need to adapt to evolving technologies. Traverse is a collection of two conference tables defined by narrow contours that broaden office space, bringing people together beautifully.



FINISHES

Premium Reconstituted
Wood Veneer



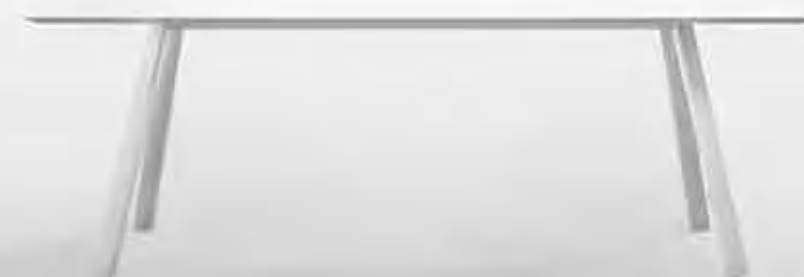
Reconstituted Wood Veneer



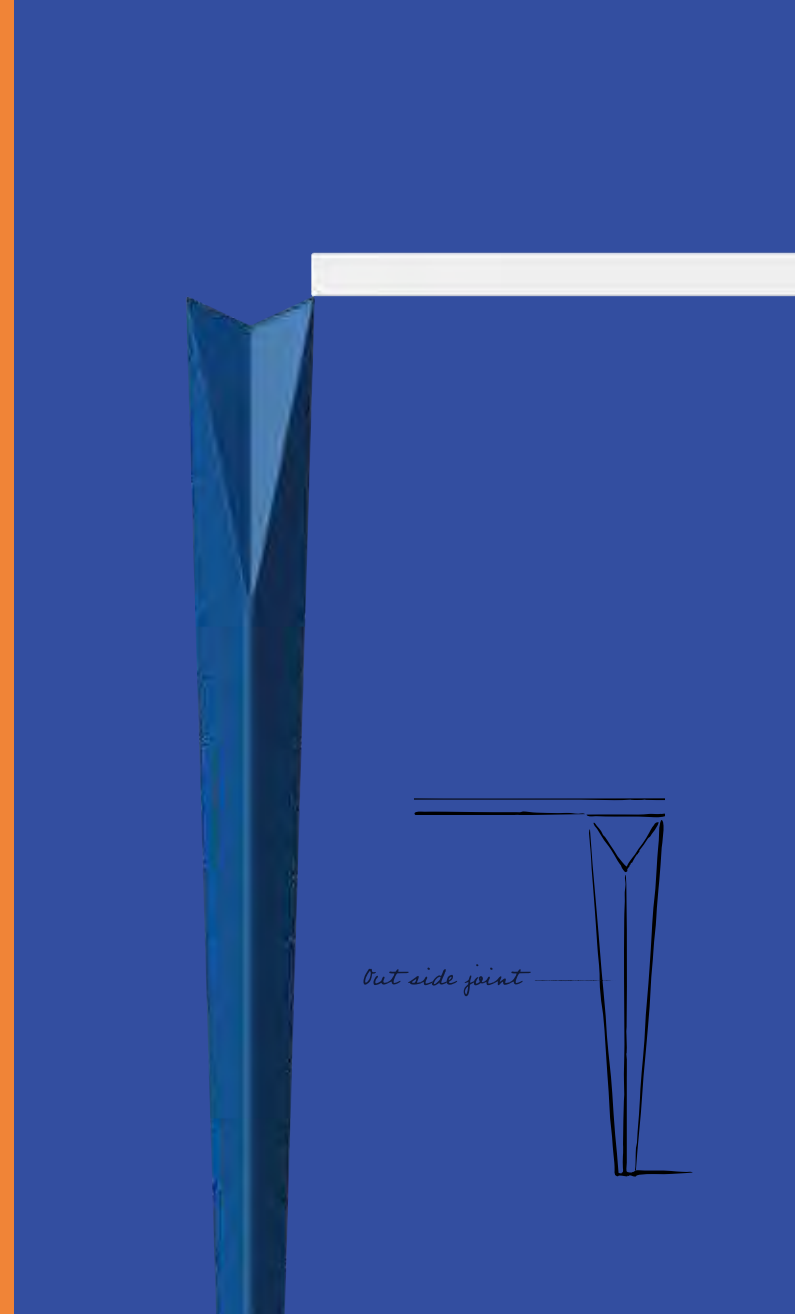
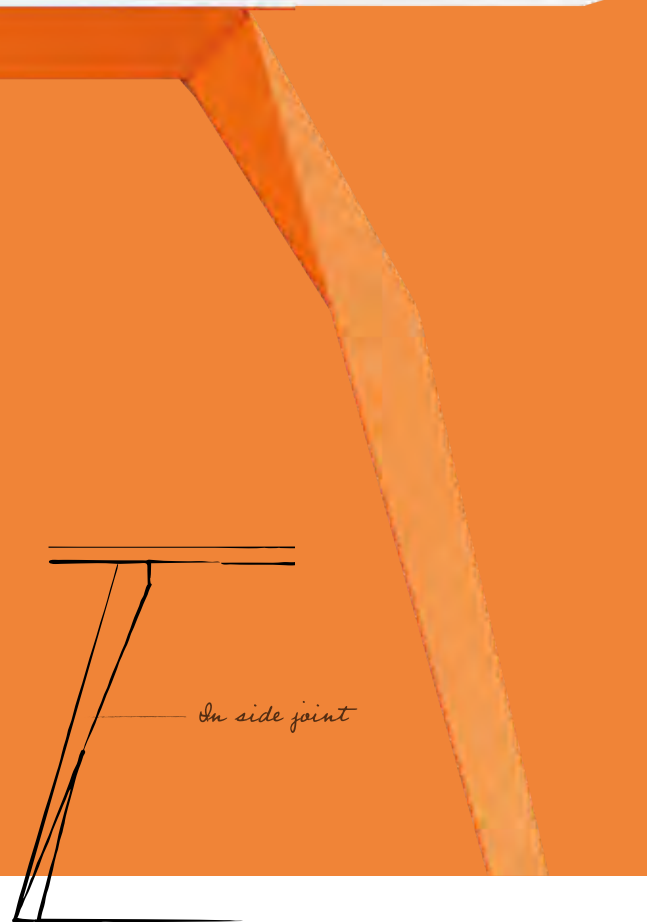
Natural Wood Veneer



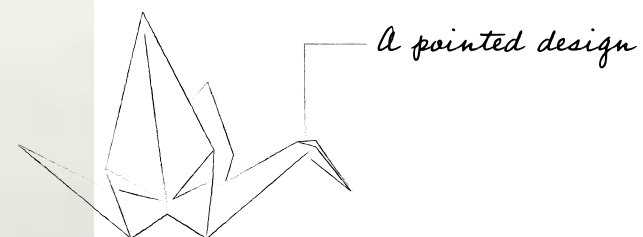
traverse **satellite**



OREE



Inspiration from
Japanese ORIGAMI



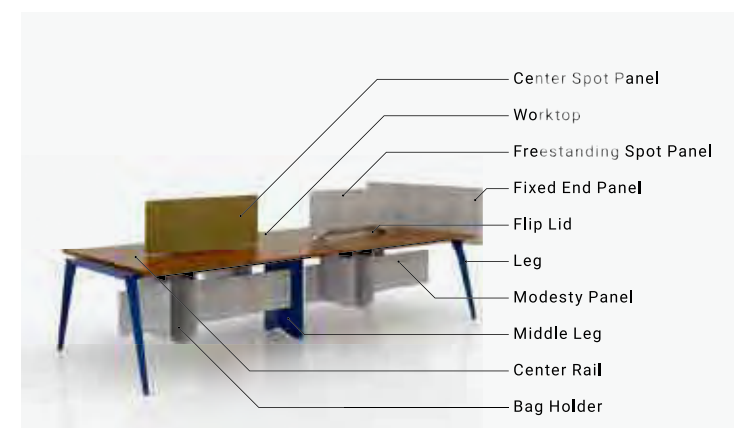
OREE signifies a point that infuses simplicity and strength while drawing inspiration from Japanese origami. With origins in Japan, origami art combines defined shapes and edges, to bring forth artistic structures. Fusing Okamura's skilled sheet metal technology with folds of thin sheet metal creates a beautiful and strong foundation.



LINE UP



OPTIONS



COLORS

Powder Coat



High-Pressure Laminate



Veneered Wood



Felt



BIFMA

Made in Thailand



Alt Piazza

LINE UP

Counter Type



1 Span Counter



2 Span Counter



Single-sided Counter

Table Type



Cafe Cabinet



Cafe Table
[Round]



Cafe Table
[Square]



Library Table

COLORS

Counter & Table Top



Leg & Base



Made in Japan

SW

QUICK TRANSITION

Desk: H650 - 1250mm
Table: H700 - 1250mm



LINE UP



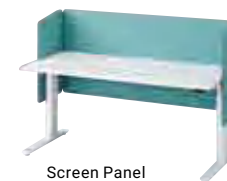
Manager Desk



Meeting Table



Work Desk
Bench Type



Screen Panel
Round Type

COLORS

Table Top



Panel : Dimple



Panel : Interlock



Panel : Felt



Made in Japan

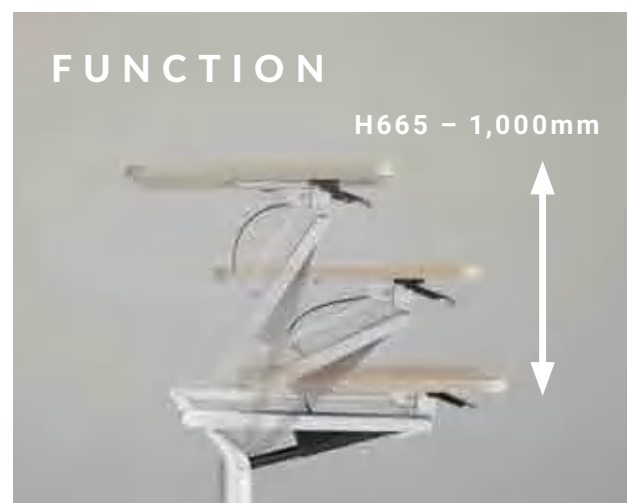


Risefit III

LINE UP



FUNCTION



COLORS



SOLISTE



OPTIONS



Desktop Panel



Bag Hook



Modesty Panel



Tray Option

COLORS

Table Top & Frame



Frame





Manifold A

END LEG TYPES



Slant Leg



Straight Leg

PANEL SELECTIONS



Fabric



Frosted Acrylic

OPTIONS



Modesty Panel



Cable Guard



Middle Leg



Bag Hook

COLORS

Table Top



Leg



Panel



Made in Thailand

VD - A Desk

LINE UP



Workbench



Single Table



Meeting Table

FUNCTIONS



Flip-top



Bag Holder (Option)



Desktop Panel (Option)



Central Drawer (Option)

COLORS

Frame



Table Top



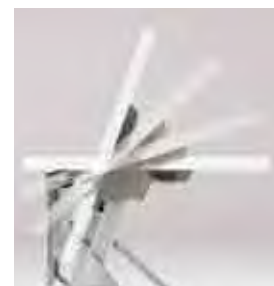
Made in Thailand



FLAPTOR-A



FUNCTIONS



Motion Flip-Up



Nesting

COLORS

Table Top



Leg



GREEN WAVE BIFMA
Made in Thailand



DN Mobile Drawer

LINE UP



2 Drawers Side-Handle



3 Drawers Side-Handle



2 Drawers Front-Handle



3 Drawers Front-Handle

FUNCTIONS



Key for Every Drawer



Storage Potential



Safety Rollers



Unit Handgrip

COLORS



BIFMA

Made in Thailand

- MUFFLE
- DRAPE
- NAGARE
- POSIT-A
- GO-DO

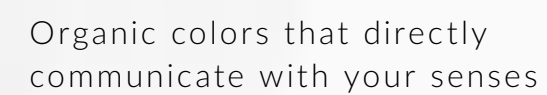


LOUNGE



LINE UP

Three variations of the 'Cocoon' office pod are shown side-by-side. Each pod is a small, rectangular structure with a curved, tunnel-like entrance. The first pod on the left is purple, the middle one is orange, and the one on the right is green. Each pod contains a desk with a laptop and a chair.



COLORS



drape

THE PERFECT GET-AWAY SPACE

The highly effective sound-absorbing panels reduce noise in open offices, giving you a quiet environment you need to focus on your task. The panels also prevent inside sounds from leaking.



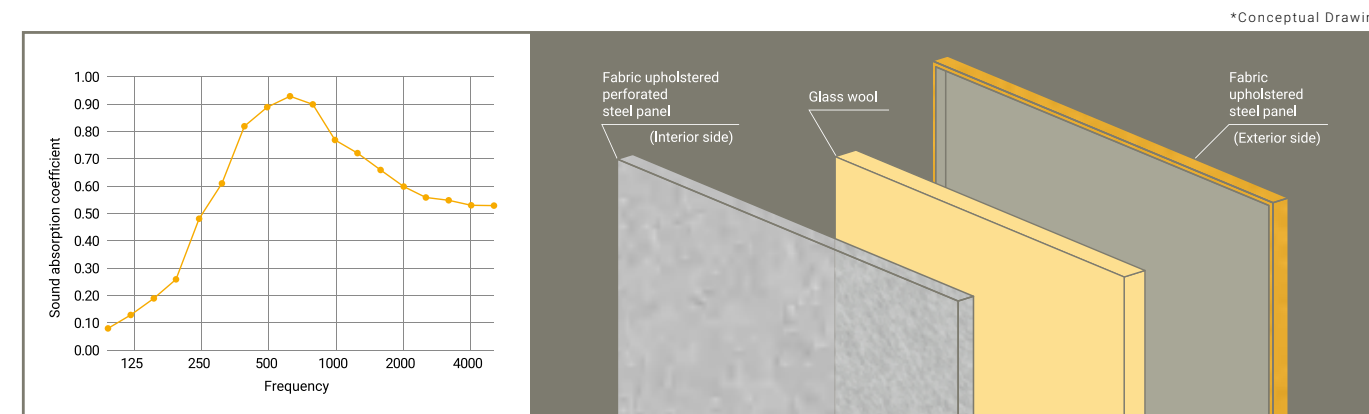
CREATIVE GEOMETRIC CONFIGURATIONS

"Tri" is the standard configuration consisting of three panels, perpendicular to each to make a U-shape. "Tetra" and "Penta" have an additional short panel that sits at a 120 degree angle at the entrance for an added level of privacy. A myriad of configurations are possible with your creativity.

LINE UP



FUNCTIONS



Distraction-blocking panels to enhance workers' focus

The slim profile panels are only 30mm thick. The core of these panels have glass wool insulation for excellent sound absorption. The clean and straightforward design creates mini-environments for focus throughout the office while also adding aesthetic interest points and color to the workplace.

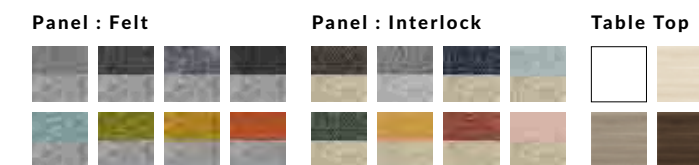
Performance

- Acoustics :**
- NRC Value - 0.70** *Noise Reduction Coefficient
 - SAA Value - 0.68** *Sound Absorption Average
 - Note: Results are of the Felt applied panel. Value varies according to cover fabric.
 - The measurement results comprise materials evaluations for panel units, and do not guarantee actual sound absorption effects.
- Fire test :**
- ASTM E84 - Class A**
 - Note: Results are of the Felt applied panel and Interlock applied panel.

OPTIONS



COLORS



The inside fabric comes with gray or beige, and the outer side is available with 18 beautiful contrasting colors. A single color fabric option is also available upon request.

NAGARE



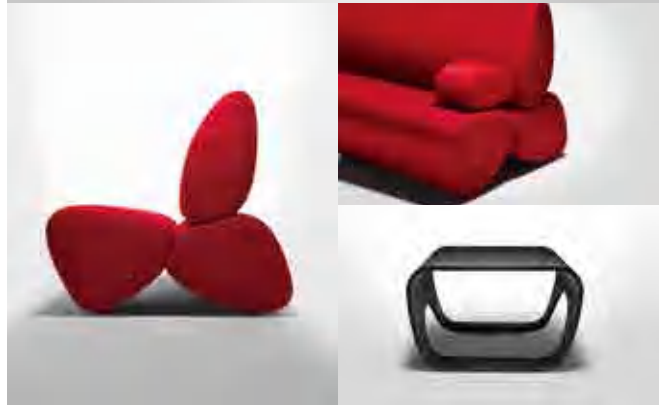
Bringing nature to work

Nagare, which means 'flow' in Japanese, is a new collection of furniture that responds to the way we work today. This collection of seating and tables, inspired by nature, brings a gentle sense of movement and creates a place of repose within the information storm of our times. Nagare provides the opportunity for mindfulness and introspection, as if you are sitting on the bank of a brook.



LINE UP

Lounge Type



Occasional Table (Option)

Platform Type



Personal Table (Option)

ACCESSORIES



Work Cushion



Armrest Cushion



Multi-Purpose Cushion



Power Outlet

COLORS

Uniform Melange



Twill



Made in Japan



Posit-A

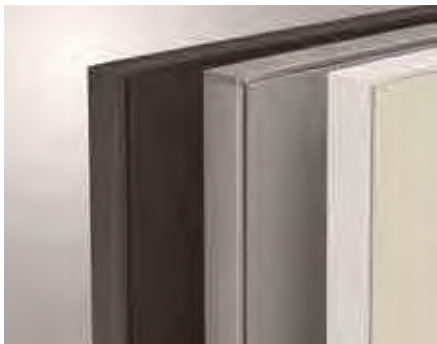


Posit is a partition system that features beautifully streamlined 40mm width panels that are available in a variation of sizes and colors, which can be easily configured to create an enclosed space in the office.

FUNCTIONS



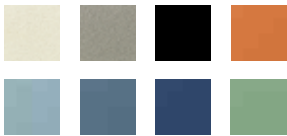
Available in four height and four widths.



The flexibility of panel layout enable to create various spaces.

COLORS

Fabric



Trim



BIFMA

Made in Thailand

GO-DO / WORKPLACE PRODUCTS



ACOUSTIC PANEL SERIES

The new line-up features felt-made acoustic panels for echo and noise absorption. Improve acoustic environment by covering the entire wall or a small area according to room size and needs.

NRC* Value 0.75 | SAA Value 0.76**

Note: Results are of the Flat panel. Value varies according to panel design.
The measurement results comprise materials evaluations for panel units, and do not guarantee actual sound absorption effects.
* Noise Reduction Coefficient
** Sound Absorption Average

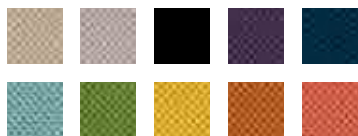


COLORS

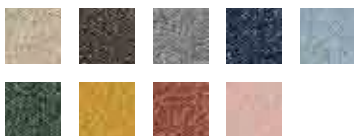
Felt



AS Knit



Interlock



BIFMA

Made in Japan

BRINGING CREATIVITY AND NEW VALUE TO INTERIOR SPACES

Expectations regarding interior spaces have changed in step with evolving lifestyles and work styles. Okamura anticipates these changes and conceptualizes optimal interior spaces that meet the needs of every user. Through ideal interior spaces, we create new value for offices.

CASE STUDY



In offices where workers carry out diverse tasks, it is best if individuals can freely choose the environment optimally suited to their particular needs. Okamura offers proposals that create spaces accommodating of each individual's characteristics and circumstances to maximize their capabilities.



DOLE ASIA HOLDINGS PTE. LTD.

Scope of Work : Design and Build
Office Furniture Supply

Industry : Food Industry

Location : Singapore

Area : 930 m²

Completion Year : 2017

About the Company :

The office was designed to recreate the feeling of a tropical fruit plantation, with imitation banana trees, a blue sky, and OSB finish to complete the idea. The tagline for the office was "Our office is a farm/firm with fertile soil."

Products :





GOJEK SINGAPORE

Scope of Work : Office Furniture Supply

Industry : Transportation

Location : Singapore

Area : 946 m²

Completion Year : 2018

About the Company :

Gojek is a transportation network company and logistics startup company based in Jakarta, Indonesia. It is the first unicorn company, and also the only company in Southeast Asia that is included in Fortune's 50 Companies That Changed the World in 2017. Gojek operates in Indonesia, Vietnam, Singapore, and Thailand and will soon operate in the Philippines and Malaysia.

Products :



Sylphy Luce



PT. MENARA ASTRA

Scope of Work : Office Furniture Supply

Industry : Real Estate

Location : Jakarta, Indonesia

Area : 510 m²

Completion Year : 2018

About the Company :

Pt. Menara Astra is a property management company which was initiated in 2013 by the property division of Astra International, which subsequently establishes several subsidiaries to manage several projects such as integrated office, apartment complex, and township.

Products :



Manifold Flaptor CG-M Luce Repiroue Muffle





SHINKO ASIA (BANGKOK) CO., LTD.

Scope of Work : Design and Build
Office Furniture Supply

Industry : Manufacturing

Location : Samutsakorn, Thailand

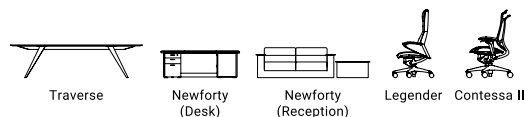
Area : 1,000 m²

Completion Year : 2018

About the Company :

When Shinko Asia built a new office next to the factory, the company furnished it with many high-end Japanese products, many of which are introduced to Thailand for the first time, in an attempt of boosting the company's brand appeal.

Products :



HEFEI BAOWEN PROPERTY CO., LTD.

Scope of Work : Office Furniture Supply

Industry : Real Estate

Location : Hefei, China

Area : 5,000 m²

Completion Year : 2018

About the Company :

Hefei Baowen Property Co., Ltd. provides property development and management services. The Company offers its services to clients in the East Central area of China.

Products :



SUSTAINABILITY

Okamura Group aims to be a global company trusted and appreciated by society and fulfill its obligations to our shareholders through our business activities. In agreement with the philosophy of the Sustainable Development Goals (SDGS), international goals set by the United Nations for the realization of a sustainable world by 2030, Okamura will contribute to the achievement of these goals through our business and social contribution activities.

Okamura will fulfill our corporate social responsibility based on our mission:

"We serve society by creating environments for dynamic interaction through innovative ideas and proven quality."



MANAGEMENT POLICY

Founding Spirit	Industrial manufacturing cooperative	Company Creed	Creativity, cooperation, frugality, savings and service.
Motto	Quality pays for itself.	Basic Policy	<ul style="list-style-type: none">• Teamwork• Competitiveness in the international market• Proactive creativity and ingenuity etc.

CSR POLICY

- Promotion of Compliance
- Pursuit of Quality
- Environmental Friendliness
- Disclosure of Information
- Workplace Improvements
- Respect for Human Rights
- Harmony with Society

< Management Orientation > Individual Policies Influencing Our Corporate Activities

BEHAVIORAL GUIDELINES

For the happiness of everyone around us.

S hine	M ore	I mage	L ink	E xpert
Developing through learning and discovery.	Aiming for more than positive results.	Thinking of others, thinking of the future.	Expanding our connections and working with others.	Creating strengths that are second to none.

CODE OF CONDUCT

1. Respect for human rights
2. Ethical behavior as members of society
3. Maintenance of free competition and honest business
4. Provision of safe and high-quality products and services
5. Appropriate management and disclosure of information
6. Environmental protect on and contribution to society
7. Cooperation with the international community
8. Maintenance of sound relationship with government
9. Dissociation with antisocial forces
10. Cultivation of vibrant work environments